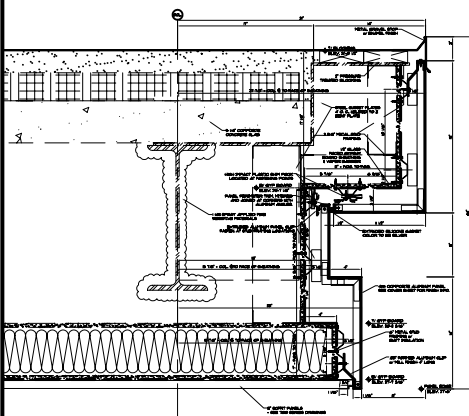
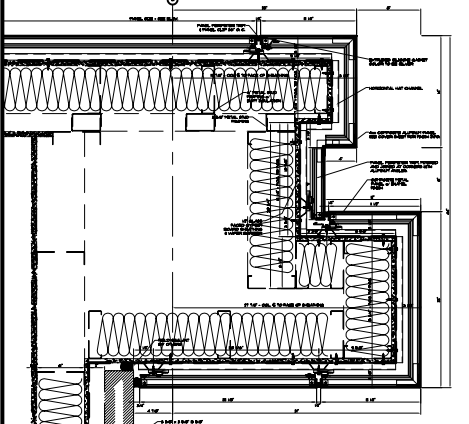


**SOUTH WALL PANEL ELEVATION**

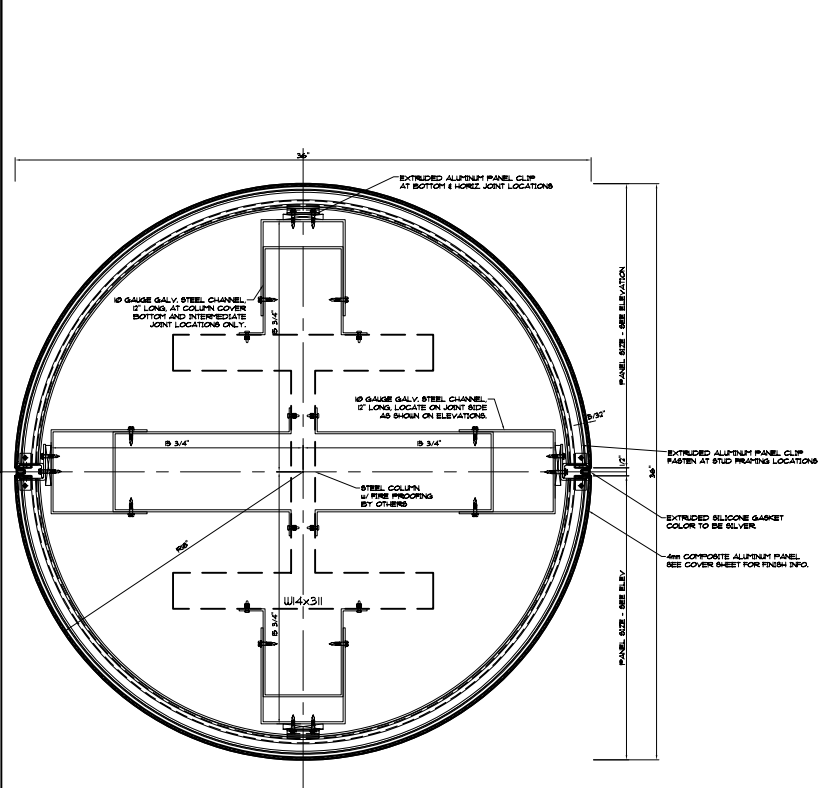
SCALE: 3/32" = 1'-0"



**A PANEL HEAD DETAIL** SCALE: 1/2" = 1'-0"



**B PANEL JAMB DETAIL** SCALE: 1/2" = 1'-0"

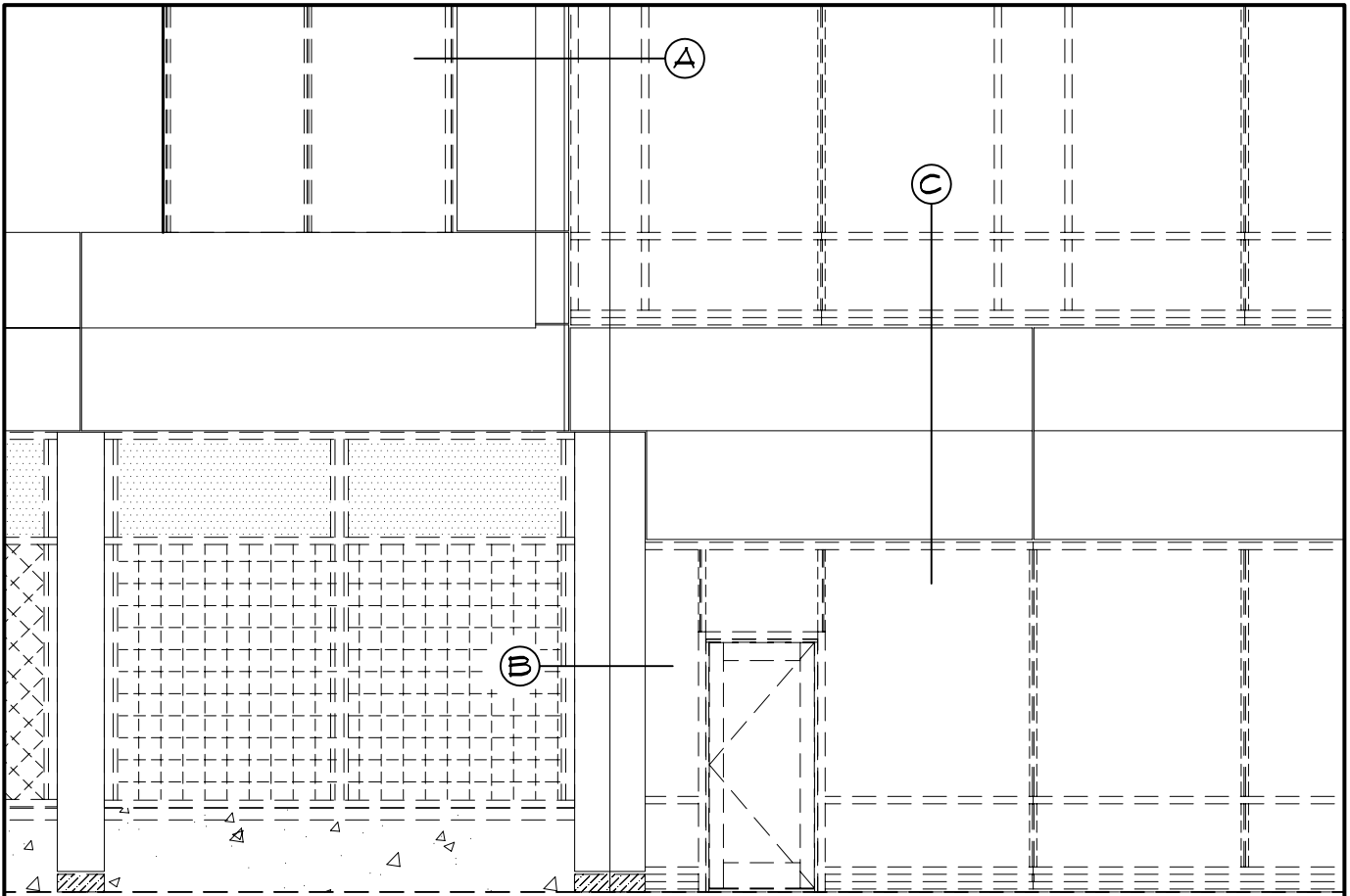


**C COLUMN COVER DETAIL** SCALE: 1" = 1'-0"

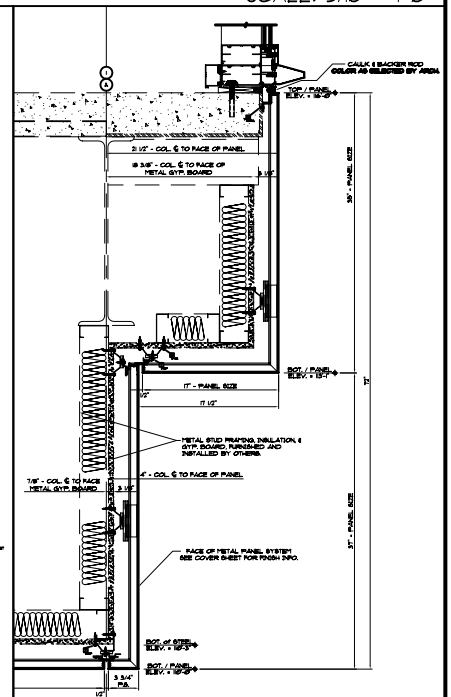
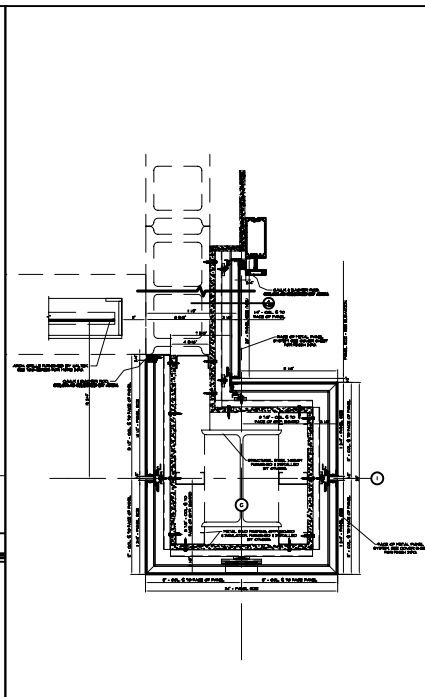
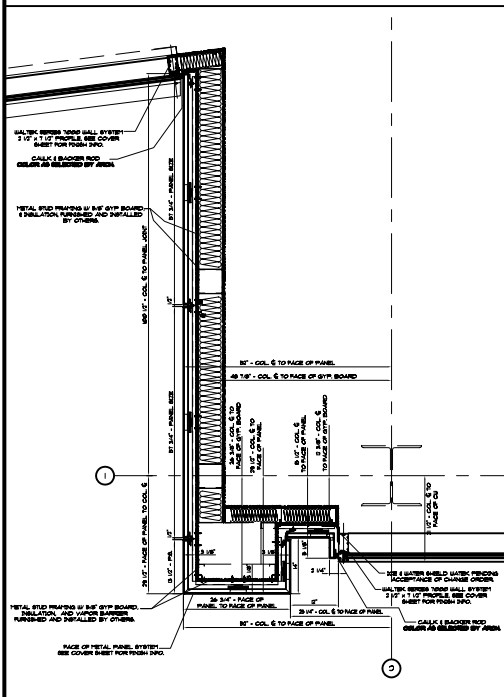
VISIT US ON THE WEB AT: [WWW.WALTEKLTD.COM](http://WWW.WALTEKLTD.COM) - OR E-MAIL US AT [SALES@WALTEKLTD.COM](mailto:SALES@WALTEKLTD.COM)



IF YOU WOULD LIKE TO LEARN MORE ABOUT OUR WALL SYSTEMS OR WISH TO DISCUSS PROJECT SPECIFIC DETAILS PLEASE CONTACT US AT THE ADDRESS & PHONE NUMBER SHOWN.



SCALE: 3/16" = 1'-0"



**A** PANEL JAMB DETAIL

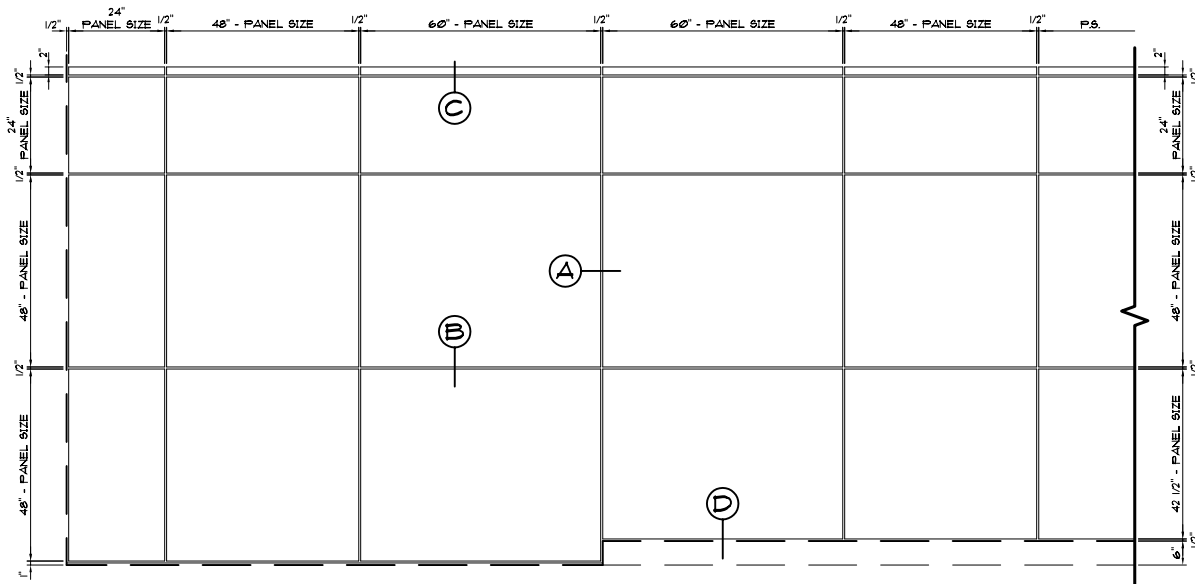
**B** PANEL COLUMN DETAIL

**C** HORIZONTAL PANEL BAND

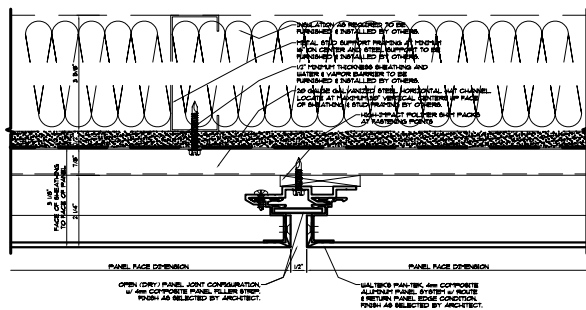
VISIT US ON THE WEB AT: [WWW.WALTEKLTD.COM](http://WWW.WALTEKLTD.COM) - OR E-MAIL US AT [SALES@WALTEKLTD.COM](mailto:SALES@WALTEKLTD.COM)



IF YOU WOULD LIKE TO LEARN MORE ABOUT OUR WALL SYSTEMS OR WISH TO DISCUSS PROJECT SPECIFIC DETAILS PLEASE CONTACT US AT THE ADDRESS & PHONE NUMBER SHOWN.

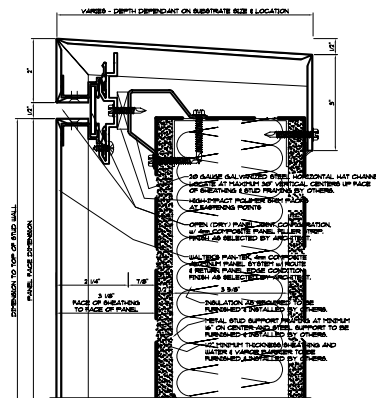


SCALE: 1/4" = 1'-0"



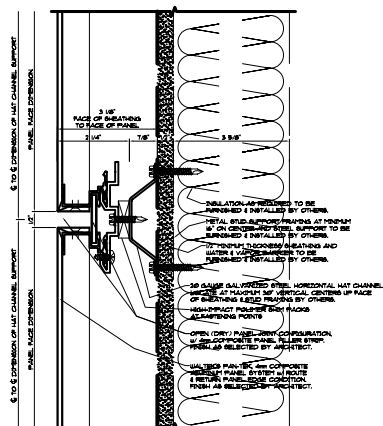
**A** TYPICAL VERTICAL JOINT

SCALE: 2" = 1'-0"



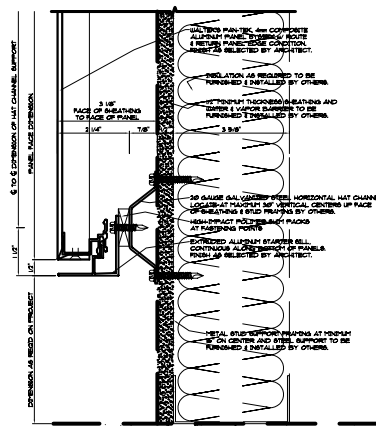
**C** TYPICAL HEAD DETAIL

SCALE: 2" = 1'-0"



**B** TYPICAL HORIZONTAL JOINT

SCALE: 2" = 1'-0"



**D** TYPICAL SILL DETAIL

SCALE: 2" = 1'-0"

VISIT US ON THE WEB AT: [WWW.WALTEKLTD.COM](http://WWW.WALTEKLTD.COM) - OR E-MAIL US AT [SALES@WALTEKLTD.COM](mailto:SALES@WALTEKLTD.COM)



IF YOU WOULD LIKE TO LEARN MORE ABOUT OUR WALL SYSTEMS OR WISH TO DISCUSS PROJECT SPECIFIC DETAILS PLEASE CONTACT US AT THE ADDRESS & PHONE NUMBER SHOWN.