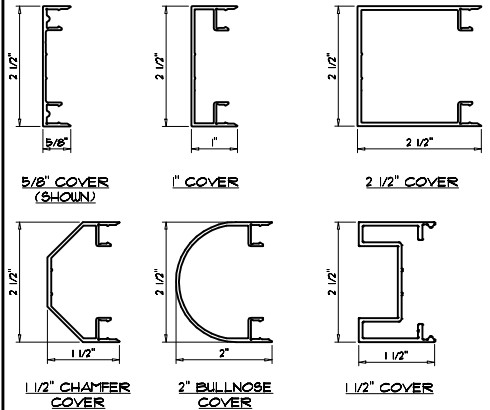


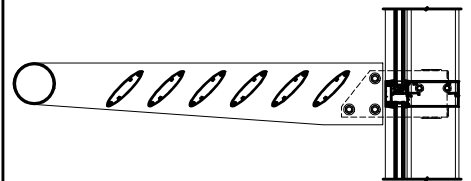
**WALTEK'S SERIES 7000-Umax
SEMI & UNITIZED FRAMING SYSTEM
STANDARD PROFILE SIZES**

NOTES: PROJECT SPECIFIC CUSTOM PROFILE SIZES ARE AVAILABLE UPON REQUEST.

EXTERIOR COVER OPTIONS

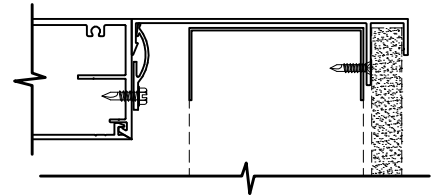


NOTES: CUSTOM EXTRUSION PROFILES ARE ALSO AVAILABLE.



PROJECTING SUNSHADES AND/ OR LIGHT SHELVES AVAILABLE

SILL TRIM OPTIONS



NOTES: PROJECT SPECIFIC CUSTOM SILL DEPTHS AND PROFILES ARE AVAILABLE UPON REQUEST.

TYPICAL PERFORMANCE LEVELS

AIR: 0.05 CFM/SQ.FT. AT 6.24 LBS/SQ. FT. PER ASTM E283

WATER: 12 LBS/SQ. FT. PER ASTM E331

U-VALUE: 0.54 TO 0.31 - VALUE DEPENDANT ON GLAZING SELECTED PER AAMA 507 & NFRC-100-200-500

HIGHER PERFORMING VERSIONS ARE AVAILABLE FOR SPECIFIC PROJECT NEEDS.

FINISHING OPTIONS

- EXTERIOR: KYNAR 500/ HYLAR 5000 ANNOIDIZED
- INTERIOR: KYNAR 500/ HYLAR 5000 ACRYLIC ANNOIDIZED

GLAZING OPTIONS

7000-Umax SERIES FRAMING SYSTEMS ACCOMMODATE GLAZING OPTIONS FROM 1" INSULATED TO 1 3/4" DOUBLE INSULATED

VISIT US ON THE WEB AT: WWW.WALTEKLTD.COM - OR E-MAIL US AT SALES@WALTEKLTD.COM

CINCINNATI: (513) 577-7980

NASHVILLE: (615) 251-7040



SYSTEM
WALTEK'S SERIES 7000-Umax
SEMI & UNITIZED
FRAMING SYSTEM

THE ABOVE INFORMATION IS FOR A TYPICAL APPLICATION. CUSTOMIZATION OF ALL COMPONENTS AND PERFORMANCE LEVEL IS AVAILABLE TO MEET DESIGN CRITERIA.

IF YOU WOULD LIKE TO LEARN MORE ABOUT OUR WALL SYSTEMS OR WISH TO DISCUSS PROJECT SPECIFIC DETAILS, PLEASE CONTACT US AT THE ADDRESS & PHONE NUMBER SHOWN.