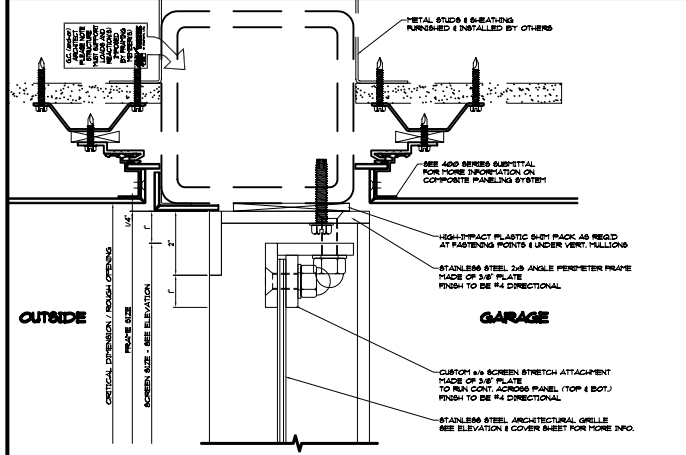
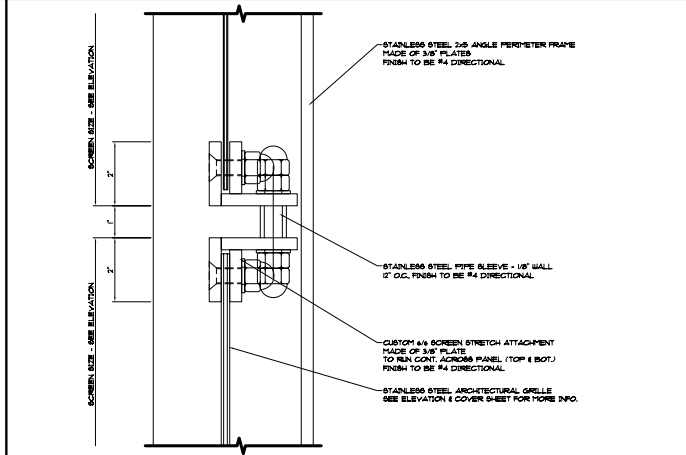


SCALE: 1/4" = 1'-0"



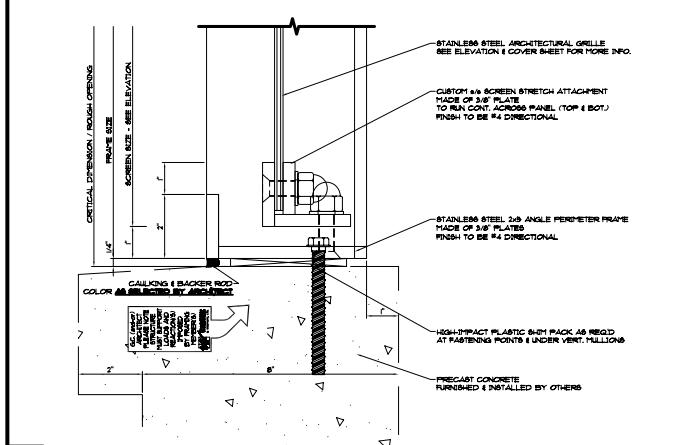
A HEAD SUPPORT DETAIL

SCALE: 2" = 1'-0"



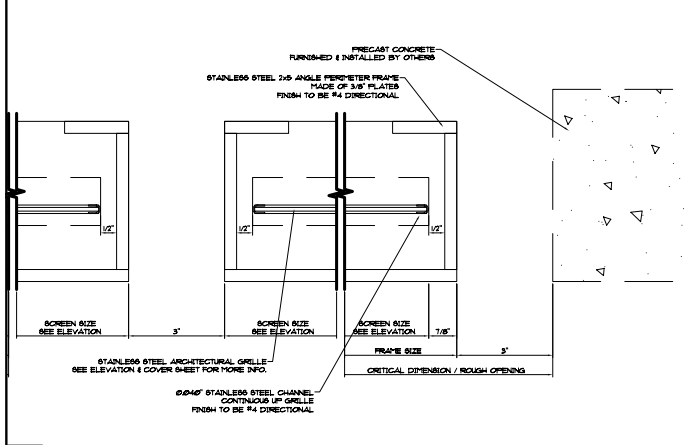
B INTERMEDIATE SUPPORT

SCALE: 2" = 1'-0"



C SILL SUPPORT DETAIL

SCALE: 2" = 1'-0"



D VERTICAL AND JAMB ANGLES

SCALE: 2" = 1'-0"

VISIT US ON THE WEB AT: [WWW.WALTEKLTD.COM](http://WWW.WALTEKLTD.COM) - OR E-MAIL US AT [SALES@WALTEKLTD.COM](mailto:SALES@WALTEKLTD.COM)



IF YOU WOULD LIKE TO LEARN MORE ABOUT OUR WALL SYSTEMS OR WISH TO DISCUSS PROJECT SPECIFIC DETAILS PLEASE CONTACT US AT THE ADDRESS & PHONE NUMBER SHOWN.