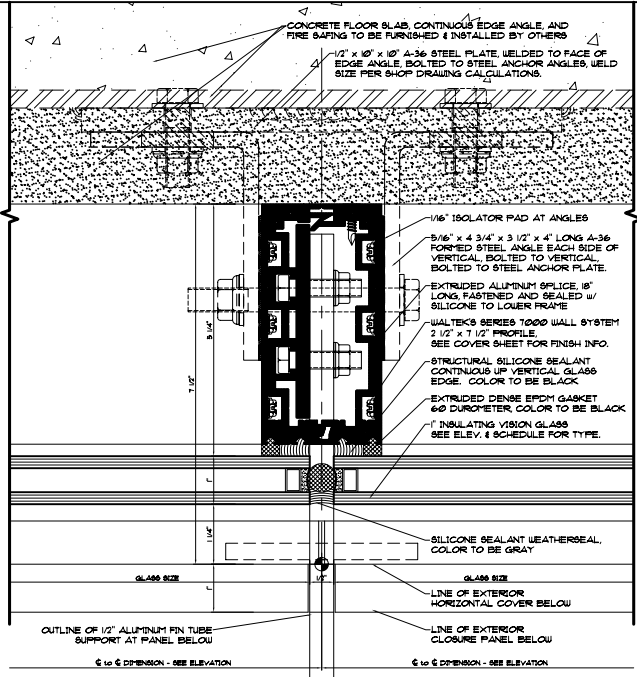
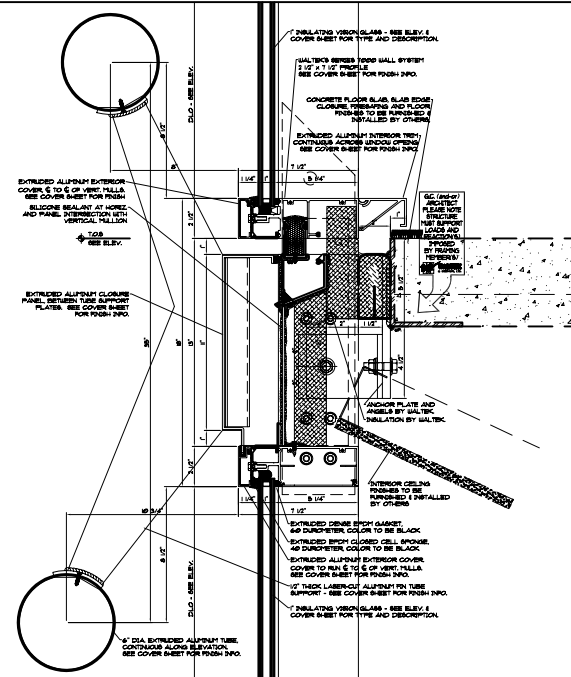


SCALE: 1/4" = 1'-0"



A TYPICAL MULLION

SCALE: 3" = 1'-0"



B FLOOR SLAB HORIZONTAL

SCALE: 1" = 1'-0"

VISIT US ON THE WEB AT: [WWW.WALTEKLTD.COM](http://WWW.WALTEKLTD.COM) - OR E-MAIL US AT [SALES@WALTEKLTD.COM](mailto:SALES@WALTEKLTD.COM)



IF YOU WOULD LIKE TO LEARN MORE ABOUT OUR WALL SYSTEMS OR WISH TO DISCUSS PROJECT SPECIFIC DETAILS PLEASE CONTACT US AT THE ADDRESS & PHONE NUMBER SHOWN.