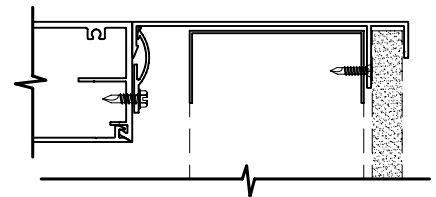


**WALTEK'S SERIES 450-T THERMALLY BROKEN  
STOREFRONT FRAMING SYSTEM**

**NOTES:** PROJECT SPECIFIC CUSTOM PROFILE SIZES ARE AVAILABLE UPON REQUEST.

**SILL TRIM OPTIONS**



**NOTES:** PROJECT SPECIFIC CUSTOM SILL DEPTHS AND PROFILES ARE AVAILABLE UPON REQUEST.

**SYSTEM FINISHES**

KYNAR 500/ HYLAR 5000  
ACRYLIC  
ANNODIZED

**GLAZING OPTIONS**

450 SERIES FRAMING SYSTEMS ACCOMMODATE  
GLAZING OPTIONS FROM 1/4" MONOLITHIC TO 1"  
INSULATED.

**TYPICAL PERFORMANCE LEVELS**

AIR: 6.24 LBS/SQ. FT. PER ASTM E283  
WATER: 12 LBS/SQ. FT. PER ASTM E331  
CRF: 55 PER AAMA 1503

HIGHER PERFORMING VERSIONS ARE  
AVAILABLE FOR SPECIFIC PROJECT NEEDS.

VISIT US ON THE WEB AT: [WWW.WALTEKLTD.COM](http://WWW.WALTEKLTD.COM) - OR E-MAIL US AT [SALES@WALTEKLTD.COM](mailto:SALES@WALTEKLTD.COM)

CINCINNATI: (513) 577-7980

NASHVILLE: (615) 251-7040

SYSTEM



WALTEK'S SERIES 450-T  
THERMALLY BROKEN  
STOREFRONT FRAMING SYSTEM

THE ABOVE INFORMATION IS FOR A TYPICAL  
APPLICATION. CUSTOMIZATION OF ALL  
COMPONENTS AND PERFORMANCE LEVEL IS  
AVAILABLE TO MEET DESIGN CRITERIA.

IF YOU WOULD LIKE TO LEARN MORE ABOUT OUR WALL SYSTEMS OR WISH TO DISCUSS PROJECT  
SPECIFIC DETAILS, PLEASE CONTACT US AT THE ADDRESS & PHONE NUMBER SHOWN.