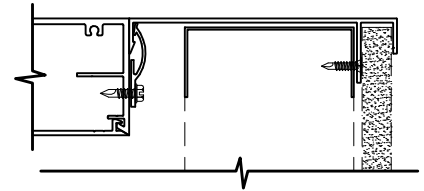


**WALTEK'S SERIES 7000-SG UNITIZED FRAMING SYSTEM STANDARD PROFILE SIZES**

**NOTES:** PROJECT SPECIFIC CUSTOM PROFILE SIZES ARE AVAILABLE UPON REQUEST.

**SILL TRIM OPTIONS**



**NOTES:** PROJECT SPECIFIC CUSTOM SILL DEPTHS AND PROFILES ARE AVAILABLE UPON REQUEST.

**SYSTEM FINISHES**

KYNAR 500/ HYLAR 5000  
ACRYLIC  
ANNODIZED

**GLAZING OPTIONS**

7000 SERIES FRAMING SYSTEMS  
ACCOMMODATE GLAZING OPTIONS FROM 1/4"  
MONOLITHIC TO 1" INSULATED.

**TYPICAL PERFORMANCE LEVELS**

AIR: 0.06 CFM/SQ.FT. AT 6.24 LBS/SQ. FT.  
PER ASTM E283

WATER: 12 LBS/SQ. FT. PER ASTM E331

CRF: 72 PER AAMA 1503

HIGHER PERFORMING VERSIONS ARE  
AVAILABLE FOR SPECIFIC PROJECT NEEDS.

VISIT US ON THE WEB AT: [WWW.WALTEKLTD.COM](http://WWW.WALTEKLTD.COM) - OR E-MAIL US AT [SALES@WALTEKLTD.COM](mailto:SALES@WALTEKLTD.COM)

CINCINNATI: (513) 577-7980

NASHVILLE: (615) 251-7040



SYSTEM  
**WALTEK'S SERIES 7000-SG  
UNITIZED FRAMING SYSTEM**

THE ABOVE INFORMATION IS FOR A TYPICAL APPLICATION. CUSTOMIZATION OF ALL COMPONENTS AND PERFORMANCE LEVEL IS AVAILABLE TO MEET DESIGN CRITERIA.

IF YOU WOULD LIKE TO LEARN MORE ABOUT OUR WALL SYSTEMS OR WISH TO DISCUSS PROJECT SPECIFIC DETAILS, PLEASE CONTACT US AT THE ADDRESS & PHONE NUMBER SHOWN.