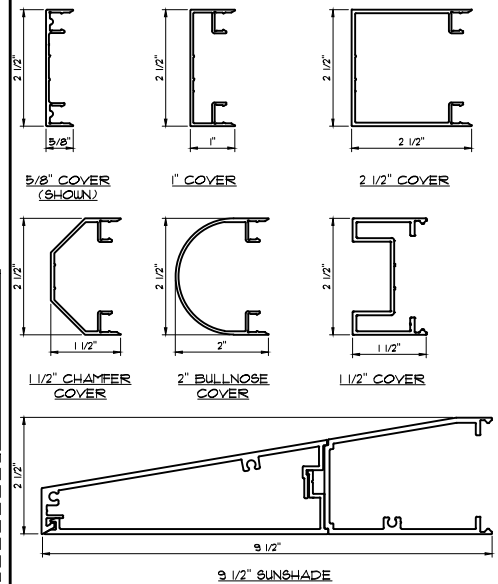


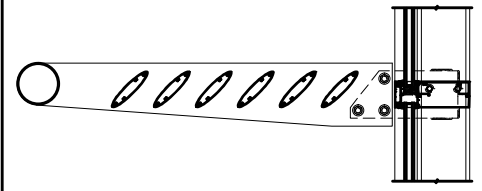
**WALTEK'S SERIES 7000-VBJ  
SEMI & UNITIZED FRAMING SYSTEM  
STANDARD PROFILE SIZES**

**NOTES:** PROJECT SPECIFIC CUSTOM PROFILE SIZES ARE AVAILABLE UPON REQUEST.

**EXTERIOR COVER OPTIONS**

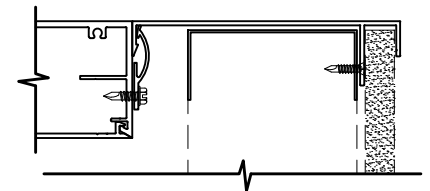


**NOTES:** CUSTOM EXTRUSION PROFILES ARE ALSO AVAILABLE.



PROJECTING SUNSHADES AND/ OR LIGHT SHELVES AVAILABLE

**SILL TRIM OPTIONS**



**NOTES:** PROJECT SPECIFIC CUSTOM SILL DEPTHS AND PROFILES ARE AVAILABLE UPON REQUEST.

**FINISHING OPTIONS**

- EXTERIOR:  
KYNAR 500/ HYLAR 5000  
ANNODIZED
- INTERIOR:  
KYNAR 500/ HYLAR 5000  
ACRYLIC  
ANNODIZED

**GLAZING OPTIONS**

7000 SERIES FRAMING SYSTEMS  
ACCOMMODATE GLAZING OPTIONS FROM 1/4"  
MONOLITHIC TO 1" INSULATED.

**TYPICAL PERFORMANCE LEVELS**

AIR: 0.06 CFM/SQFT. AT 6.24 LBS/SQ. FT.  
PER ASTM E283

WATER: 12 LBS/SQ. FT. PER ASTM E331

CRF: 65 PER AAMA 1503  
HIGHER PERFORMING VERSIONS ARE  
AVAILABLE FOR SPECIFIC PROJECT NEEDS.

VISIT US ON THE WEB AT: [WWW.WALTEKLTD.COM](http://WWW.WALTEKLTD.COM) - OR E-MAIL US AT [SALES@WALTEKLTD.COM](mailto:SALES@WALTEKLTD.COM)

CINCINNATI: (513) 577-7980

NASHVILLE: (615) 251-7040



SYSTEM  
**WALTEK'S SERIES 7000-VBJ  
SEMI & UNITIZED  
FRAMING SYSTEM**

THE ABOVE INFORMATION IS FOR A TYPICAL APPLICATION. CUSTOMIZATION OF ALL COMPONENTS AND PERFORMANCE LEVEL IS AVAILABLE TO MEET DESIGN CRITERIA.

IF YOU WOULD LIKE TO LEARN MORE ABOUT OUR WALL SYSTEMS OR WISH TO DISCUSS PROJECT SPECIFIC DETAILS, PLEASE CONTACT US AT THE ADDRESS & PHONE NUMBER SHOWN.