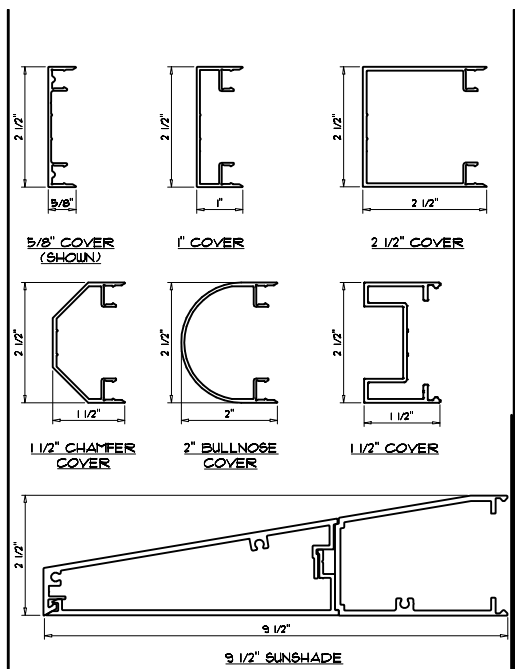
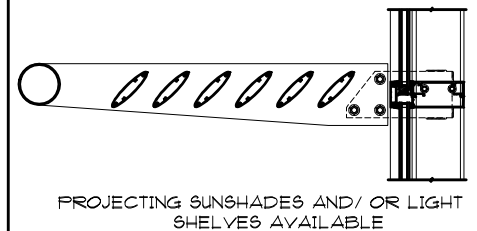


**WALTEK'S SERIES 7000
SEMI & UNITIZED FRAMING SYSTEM
STANDARD PROFILE SIZES**

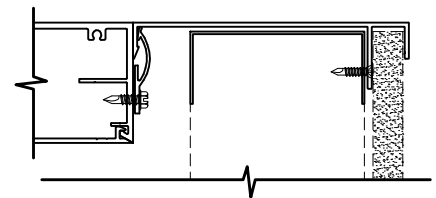
NOTES: PROJECT SPECIFIC CUSTOM PROFILE SIZES ARE AVAILABLE UPON REQUEST.



NOTES: CUSTOM EXTRUSION PROFILES ARE ALSO AVAILABLE.



SILL TRIM OPTIONS



NOTES: PROJECT SPECIFIC CUSTOM SILL DEPTHS AND PROFILES ARE AVAILABLE UPON REQUEST.

FINISHING OPTIONS

- EXTERIOR: KYNAR 500/ HYLAR 5000 ANNOIDIZED
- INTERIOR: KYNAR 500/ HYLAR 5000 ACRYLIC ANNOIDIZED

GLAZING OPTIONS

7000 SERIES FRAMING SYSTEMS ACCOMMODATE GLAZING OPTIONS FROM 1/4" MONOLITHIC TO 1" INSULATED.

TYPICAL PERFORMANCE LEVELS

AIR: 0.06 CFM/SGFT. AT 6.24 LBS/SQ. FT. PER ASTM E283
 WATER: 12 LBS/SQ. FT. PER ASTM E331
 CRF: 65 PER AAMA 1503
 HIGHER PERFORMING VERSIONS ARE AVAILABLE FOR SPECIFIC PROJECT NEEDS.

VISIT US ON THE WEB AT: WWW.WALTEKLTD.COM - OR E-MAIL US AT SALES@WALTEKLTD.COM

CINCINNATI: (513) 577-7980

NASHVILLE: (615) 251-7040



SYSTEM
**WALTEK'S SERIES 7000
 SEMI & UNITIZED
 FRAMING SYSTEM**

THE ABOVE INFORMATION IS FOR A TYPICAL APPLICATION. CUSTOMIZATION OF ALL COMPONENTS AND PERFORMANCE LEVEL IS AVAILABLE TO MEET DESIGN CRITERIA.

IF YOU WOULD LIKE TO LEARN MORE ABOUT OUR WALL SYSTEMS OR WISH TO DISCUSS PROJECT SPECIFIC DETAILS, PLEASE CONTACT US AT THE ADDRESS & PHONE NUMBER SHOWN.