

**WALTEK'S SLIMLINE SERIES PROJECT-OUT AWNING
AND CASEMENT WINDOW SYSTEM**

NOTES: PROJECT SPECIFIC CUSTOM PROFILE SIZES ARE AVAILABLE UPON REQUEST.

GLAZING OPTIONS

WALTEK'S FRAMING SYSTEMS ACCOMMODATE A WIDE RANGE OF GLAZING OPTIONS FROM 1/4" MONOLITHIC TO 1" INSULATING AS WELL AS A WIDE VARIETY OF LAMINATED PRODUCTS.

SYSTEM FINISHES

KYNAR 500/ HYLAR 5000
ACRYLIC
ANNODIZED

TYPICAL PERFORMANCE LEVELS

AIR: 6.24 LBS/SQ. FT. PER ASTM E283

WATER: 12 LBS/SQ. FT. PER ASTM E331

CRF: 55 PER AAMA 1503

HIGHER PERFORMING VERSIONS ARE AVAILABLE FOR SPECIFIC PROJECT NEEDS.

VISIT US ON THE WEB AT: WWW.WALTEKLTD.COM - OR E-MAIL US AT SALES@WALTEKLTD.COM

CINCINNATI: (513) 577-7980

NASHVILLE: (615) 251-7040

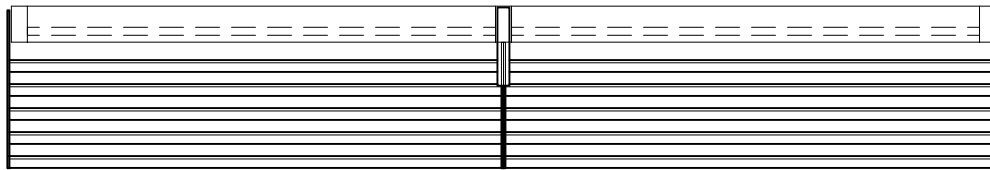
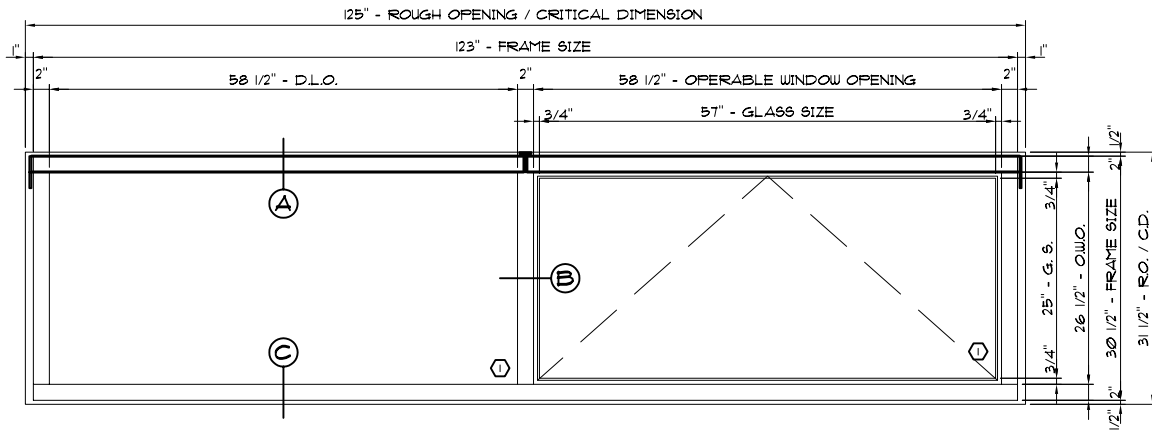
SYSTEM



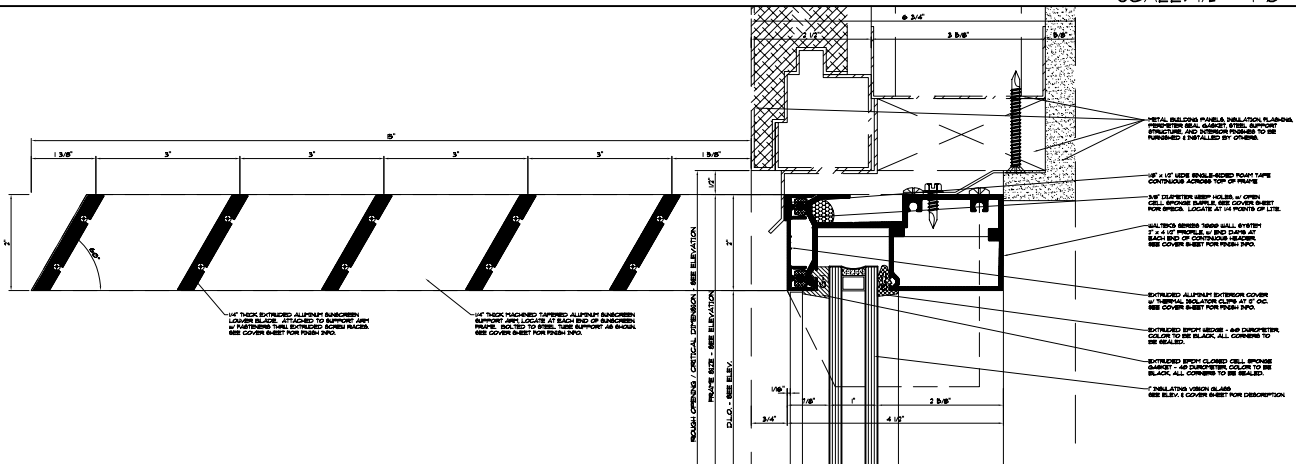
WALTEK'S SLIMLINE SERIES-
PROJECT-OUT AWNING AND
CASEMENT WINDOW SYSTEM

THE ABOVE INFORMATION IS FOR A TYPICAL APPLICATION. CUSTOMIZATION OF ALL COMPONENTS AND PERFORMANCE LEVEL IS AVAILABLE TO MEET DESIGN CRITERIA.

IF YOU WOULD LIKE TO LEARN MORE ABOUT OUR WALL SYSTEMS OR WISH TO DISCUSS PROJECT SPECIFIC DETAILS, PLEASE CONTACT US AT THE ADDRESS & PHONE NUMBER SHOWN.

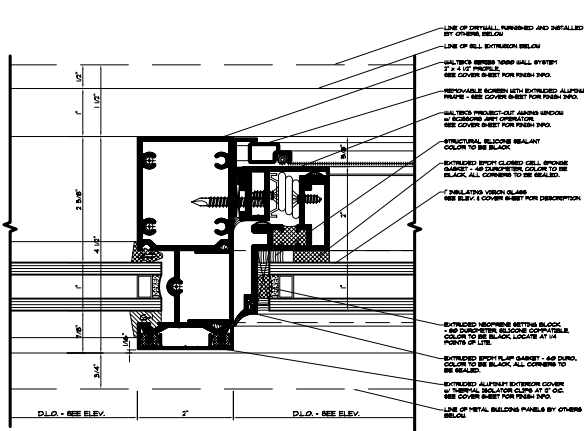


SCALE: 1/2" = 1'-0"



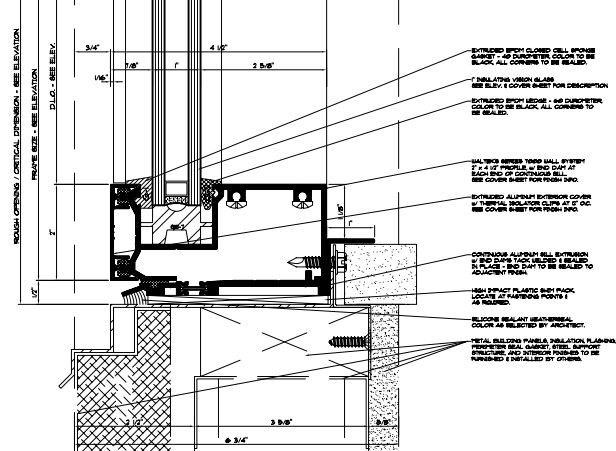
A TYPICAL HEAD DETAIL

SCALE: 3" = 1'-0"



B INTERMEDIATE VERTICAL

SCALE: 3" = 1'-0"



C TYPICAL SILL DETAIL

SCALE: 3" = 1'-0"

VISIT US ON THE WEB AT: WWW.WALTEKLTD.COM - OR E-MAIL US AT SALES@WALTEKLTD.COM



IF YOU WOULD LIKE TO LEARN MORE ABOUT OUR WALL SYSTEMS OR WISH TO DISCUSS PROJECT SPECIFIC DETAILS PLEASE CONTACT US AT THE ADDRESS & PHONE NUMBER SHOWN.