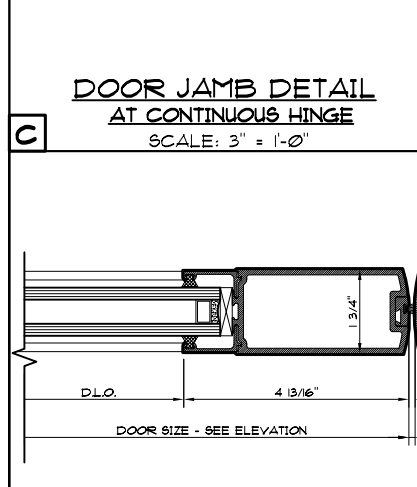
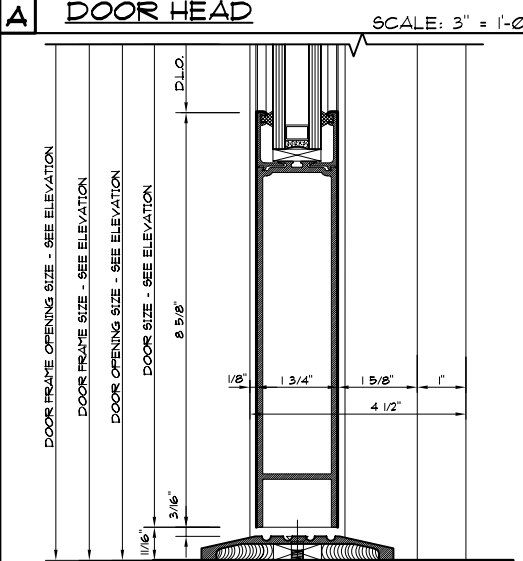
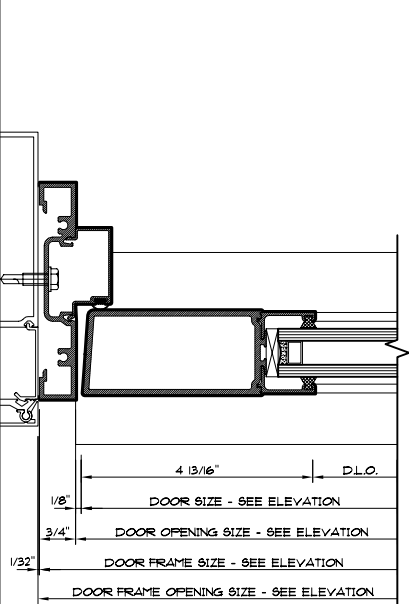
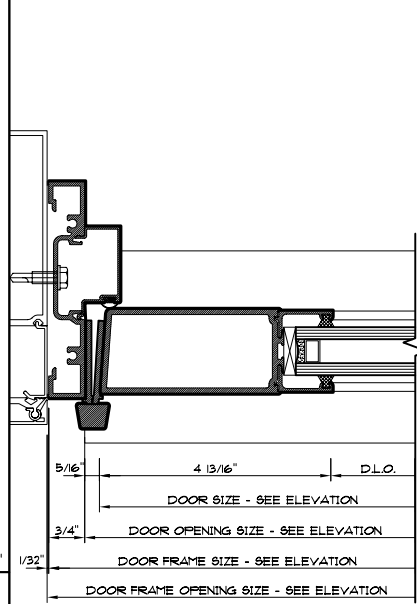
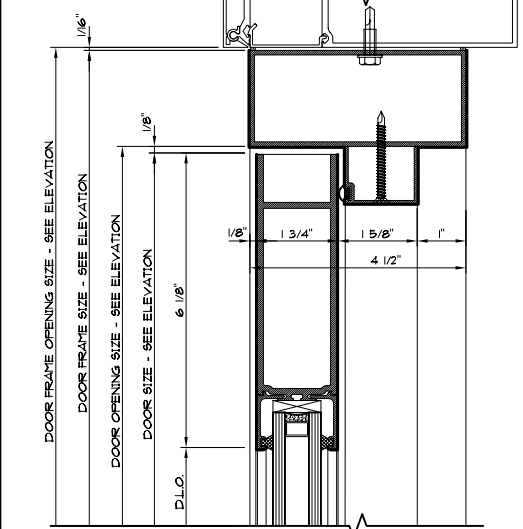


SPECIFIER NOTE:
 DOOR CLADDING AVAILABLE IN:
 - #316 STAINLESS STEEL w/
 #4 OR #7 DIRECTIONAL FINISH
 - OR IN #280 MUNTZ w/
 #4 OR #7 DIRECTIONAL FINISH

SCALE: 3/8" = 1'-0"



SCALE: 3" = 1'-0" SCALE: 3" = 1'-0"

VISIT US ON THE WEB AT: WWW.WALTEKLTD.COM - OR E-MAIL US AT SALES@WALTEKLTD.COM
 CINCINNATI: (513) 577-7980 NASHVILLE: (615) 251-7040



IF YOU WOULD LIKE TO LEARN MORE ABOUT OUR WALL SYSTEMS OR WISH TO DISCUSS PROJECT SPECIFIC DETAILS PLEASE CONTACT US AT THE ADDRESS & PHONE NUMBER SHOWN.